



# SECRETS OF THE SERENGETI

---

## **3 NIGHTS / 4 DAYS**

Nairobi City, Kenya To Mombasa, Kenya

## **Price Per Person**

Double Occupancy: 9,400.00 USD

Single Occupancy: 9,900.00 USD

Safari in style on this epic adventure. You will stay in a fabulous lodge, go in search of the Big Five, and have the option of a sunrise hot-air balloon flight over the vast Serengeti plains.

## **HIGHLIGHTS**

- Witness the astonishing wildlife of the Serengeti
- Rooms with balcony views of the plains
- Game drives with expert guides



# 01

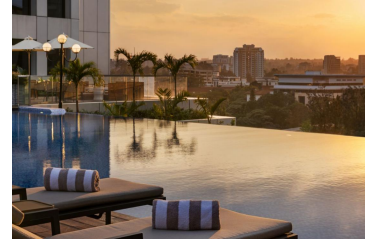
## Arrive in Nairobi

On arrival at Jomo Kenyatta International Airport, you will be met by our representative who will transfer you to the JW Marriot hotel in Nairobi, where you will stay for the night.

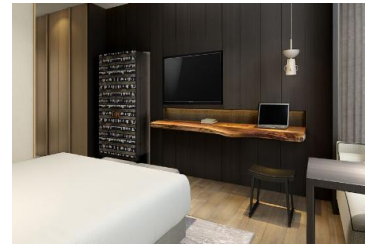


## Jw Marriott Hotel Nairobi

When looking for top hotels in Nairobi, Kenya, ensuring you find somewhere with everything you need and a reputation for delivering exceptional experiences should be a high priority. At JW Marriott Nairobi, world-class amenities and a convenient location on Chiromo Lane deliver this and more. We allow you to pursue your passions in style. The iconic hotel tower with magical views of the city offers proximity to top local attractions, as well as a variety of experiences on-site. Our hotel features 315 luxurious guest rooms, 51 serviced apartments, and outstanding event and business facilities. We also offer carefully curated restaurants and bars, and a haven of health and relaxation at the luxurious Spa by JW. The beauty of the African Savannah coupled with elegant design and incredible experiences on your doorstep makes JW Marriott Hotel Nairobi a perfect destination. As a luxury hotel in Nairobi, we make sure your stay here is everything you want it to be, whether you're visiting for business or leisure.



Club Room  
Club Level, 1 King Bed, 1 King, Mini fridge, 36sqm/387sqft, Wireless internet, complimentary, Wired internet, complimentary, Coffee/tea maker



**Arrive in the Serengeti**

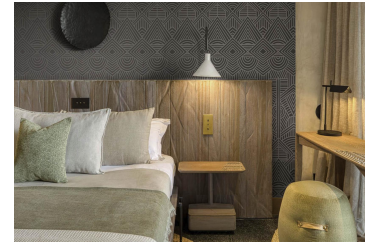
You will be transferred from your hotel to the airport for your flight to the Serengeti. Upon arrival, a guide will take you to your lodge, Serengeti Explorer, a journey of about an hour. Set in the Nyaboro Hills with commanding views of the south-central plains, the lodge has 74 rooms and suites, each with private balcony, and a choice of restaurants, as well as a cinema, art gallery, and fitness facilities. After lunch, you are welcome to relax at the camp or join your first game drive in this corner of the Serengeti, which is renowned for being rich in lions, leopards and cheetahs. Dinner will be served at the lodge.

**Meals: Breakfast Lunch Dinner**

**Serengeti Explorer**

Welcome to Serengeti Explorer, a lodge experience unlike any other. Recognised historically as one of the best bush locations in the Serengeti, Explorer has reimagined a pre-existing site and created an upscale contemporary safari lodge in which the expression of space and freedom meets that of the great outdoors. At Serengeti Explorer relaxation, meditation and adventure are all present in equal measure. Under the careful stewardship of Elewana's service standards, Explorer has crafted a series of inspired opportunities that will allow the modern safari traveller to experience the wilderness in a more contextual way. With a deep understanding of our guests' expectations derived from our near-40-year's of hospitality experience, Explorer is undoubtedly the definition of the art of safari.

Savannah Room



# 03

## Explore the wild, from dawn to dusk

Today brings a full day's exploration with the lodge's expert guides – and the option to pay for a sunrise hot-air balloon flight over the plains. The Serengeti covers almost 12,000 square miles (about the same size as the state of Connecticut) and is home to hundreds of thousands of animals including the largest concentration of lions anywhere, and, of course, the famed wildebeest migration. From the tiniest creatures to the mightiest mammals, every living thing here plays a part in this astonishing ecosystem. Prepare yourself for unforgettable encounters and fascinating discoveries. For lunch, you can choose to enjoy a picnic in the bush or return to the lodge for a hot meal before heading out again. On your return you will have time to relax before a special dinner at the Boma, an enchanting, lantern-lit, outdoor restaurant. This culinary journey, with an emphasis on flavorful and aromatic dishes, honors the rich heritage and traditions of the indigenous people of East Africa.

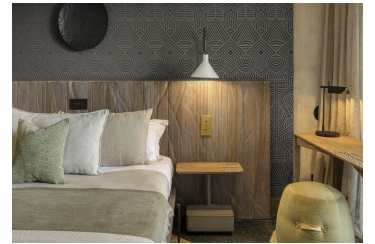


### Meals: Breakfast Lunch Dinner

#### Serengeti Explorer

Welcome to Serengeti Explorer, a lodge experience unlike any other. Recognised historically as one of the best bush locations in the Serengeti, Explorer has reimagined a pre-existing site and created an upscale contemporary safari lodge in which the expression of space and freedom meets that of the great outdoors. At Serengeti Explorer relaxation, meditation and adventure are all present in equal measure. Under the careful stewardship of Elewana's service standards, Explorer has crafted a series of inspired opportunities that will allow the modern safari traveller to experience the wilderness in a more contextual way. With a deep understanding of our guests' expectations derived from our near-40-year's of hospitality experience, Explorer is undoubtedly the definition of the art of safari.

Savannah Room



# 04

## Depart for Mombasa and the ship

After an early breakfast, it's time to say goodbye. You'll leave the lodge and transfer to the airstrip for your flight to Mombasa to join the ship.

### Meals: Breakfast



# IMPORTANT INFORMATION

**Please note:**

There is a strict luggage limit of one (soft-sided) bag weighing less than 33lbs per person. Guests carrying luggage over this weight limit will have the option to leave it at the Abercrombie and Kent office in Nairobi.

Bedding preferences can be requested but are subject to availability and cannot be guaranteed. In some cases, only twin rooms may be available.

Photography of government installations and uniformed officers is prohibited. Please obtain permission before taking photographs of the local people – your guide will assist you with this.

Please dress appropriately for hot weather – cool, comfortable, cotton clothing is recommended. Evenings can be cool, so we recommend guests bring something warmer such as a light sweater. We also advise you to wear comfortable, flat walking shoes and bring a hat and sunscreen. A pair of binoculars is useful.

Game drives are on uneven and bumpy terrain and not suitable for those with major mobility issues or back problems. This tour is not suitable for wheelchair users.

Guests should not pet or feed wildlife or walk in the game park without a guide.

Wildlife sightings are likely but not guaranteed.

**Included:**

All flights, transfers, accommodation, meals, entrance fees, and activities as stated.

**Excluded:**

Any travel, meals, drinks, and activities not specified in the tour description.

Any personal expenditure, for example souvenirs, laundry, phone calls etc.

Visa fees.

Hot-air balloon ride.

Any other services not mentioned above.

