



TAJ & TIGERS: FROM MAJESTIC PALACES TO WILD JUNGLES

5 NIGHTS / 6 DAYS

Mumbai, India: Sunday, April 26, 2026 To New Delhi, India: Friday, May 1, 2026

Price Per Person

Double Occupancy: 5,600.00 USD

Single Occupancy: 6,600.00 USD

Embark on an extraordinary post-cruise journey through India's cultural and natural wonders, featuring the legendary Taj Mahal and thrilling tiger safaris in Ranthambore. Disembark in Mumbai and fly to the royal city of Jaipur, where ancient palaces and vibrant traditions await. Experience exhilarating game drives in Ranthambore National Park, followed by the timeless beauty of Agra's Mughal treasures. Conclude the journey amidst the grandeur of New Delhi's majestic boulevards and historic monuments. An unforgettable odyssey through India's regal past and wild heart.

Top Highlights:

- Visit the magnificent Taj Mahal at both sunset and sunrise, experiencing its ethereal beauty in different lights.
- Exclusive morning and afternoon jeep safaris through Ranthambore National Park in search of Bengal tigers.
- Private exploration of Jaipur's City Palace and Albert Hall Museum, rich with royal and colonial heritage.
- Guided tour of Agra Fort, a UNESCO World Heritage site steeped in Mughal history.
- Curated panoramic drive through the grand avenues of New Delhi, highlighting colonial and modern landmarks.



01

SUNDAY
APRIL 26,
2026

Arrive Jaipur, India

On disembarkation, you will be met at the pier for your transfer to Mumbai Airport and flight to the “Pink City” of Jaipur, the capital of Rajasthan. You will eat lunch at the charming Leela Palace, then take a guided tour of this glorious city. On returning to the Leela Palace to check in, there will be time to refresh before dining at the hotel.

Meals: Lunch Dinner



The Leela Palace Jaipur

Set amid serene surroundings, The Leela Palace Jaipur evokes the grandeur of Rajputana and Mughal architecture with intricate jaalis, silver-lined chhatris, and thikri mirrorwork. Located near the UNESCO World Heritage site Jaipur, this palace hotel offers an immersive escape into royal heritage. Evenings feature Rajasthani music, dance, and starlit dining with views of the Aravalli hills.



Grand Villa

The Grand Villa features Aravalli hill or garden views, Venetian mirrors, intricate marble inlay flooring, a lounge with bone inlay coffee table, and a spacious four-fixture bathroom for refined relaxation.



Wellness in the wilderness

After breakfast, you will be driven to the Ranthambore National Park, recommended by National Geographic as one of the top 20 places in the world to visit. The Park runs along the easternmost spur of the Aravalli to the Vindhya ranges. Once the private hunting ground of the royal family of Jaipur, Ranthambore was later declared a wildlife sanctuary, and, in 1972, became part of the Project Tiger scheme. The dry and deciduous forest covers lush valleys, lakes, and grasslands, supporting multiple animals, including deer, sloth bear, caracal, leopard, and tiger. On arrival, you'll enjoy lunch at your sumptuous accommodation, the Taj Sawai. Spend the afternoon relaxing and cooling off in the Olympic-size pool or resting in the lush emerald gardens. Dinner at the hotel will be another world-class experience.

Meals: Breakfast Lunch Dinner



Taj Sawai, Ranthambore

Taj Sawai offers a luxurious sanctuary amidst the wilderness, near the famed Ranthambore National Park. Surrounded by lush greenery, this elegant retreat blends timeless charm with modern design. Experience serenity as you enter the pavilion, bordered by tranquil lily ponds, and explore the captivating harmony of nature, heritage, and refined luxury in the heart of Ranthambore.



Luxury Room With Private Courtyard
Luxury Rooms with Private Courtyard at Taj Sawai Ranthambore blend refined elegance with natural tones, featuring spacious interiors, hand-carved timber, brushed bronze accents, and curated art. A private courtyard opens to manicured lawns, offering restful luxury after wilderness adventures.



Big cats, big moments

Before sunrise, you will join an expert-led, early morning game drive. If you're lucky, you could spot a Bengal tiger, the number of which recently increased to 24 adults and 26 cubs. Each tiger has its own character, from the toothless but majestic veteran who likes to pose for tourists, to romantic "Romeo", who flirts with his entourage of females. You will then return to your hotel for breakfast and time at leisure. After lunch, you will set off in the afternoon for another game drive - when different beautiful beasts come out to play. With your heart and head filled with animal magic, you will return to the hotel, where you will dine.

Meals: Breakfast Lunch Dinner



Taj Sawai, Ranthambore

Taj Sawai offers a luxurious sanctuary amidst the wilderness, near the famed Ranthambhore National Park. Surrounded by lush greenery, this elegant retreat blends timeless charm with modern design. Experience serenity as you enter the pavilion, bordered by tranquil lily ponds, and explore the captivating harmony of nature, heritage, and refined luxury in the heart of Ranthambore.



Luxury Room With Private Courtyard

Luxury Rooms with Private Courtyard at Taj Sawai Ranthambore blend refined elegance with natural tones, featuring spacious interiors, hand-carved timber, brushed bronze accents, and curated art. A private courtyard opens to manicured lawns, offering restful luxury after wilderness adventures.



Two famous buildings, countless wonders

Today, you will visit two UNESCO World Heritage sites – a world-class double act. After breakfast, you will journey by road to Agra, eat lunch at your stunning hotel, The Oberoi Amarvilas, and then set out on an unforgettable tour. First, you will visit the imposing 16th-century Red Fort, seat of power in the days when this city was the capital. Next, you will encounter the Taj Mahal, where an expert guide will help you explore the world-famous mausoleum, set on the banks of the River Yamuna. This extraordinary white marble shrine to love was built in the 17th century by the heartbroken Mughal emperor Shah Jahan for his dead wife Mumtaz Mahal. You'll see it at sunset – perhaps the most magical time of day to see it in all its mystical glory. Return to your hotel to dine.

Meals: Breakfast Lunch Dinner



The Oberoi Amarvilas, Agra

Just 600 meters from the iconic Taj Mahal, The Oberoi Amarvilas, Agra, embodies Mughal grandeur with fountains, terraced lawns, and reflection pools. Every room offers stunning views of the Taj Mahal, while warm hospitality enhances the experience.



Premier Room

The Premier Room at The Oberoi Amarvilas, Agra, exudes Mughal-inspired elegance with handcrafted furnishings, a marble ensuite, and breathtaking views of the Taj Mahal, complemented by on-call butler service for utmost luxury.



05

THURSDAY
APRIL 30,
2026

Taj Mahal at sunrise, depart for Delhi

No doubt you won't be able to resist a second look at the Taj Mahal, this time at sunrise, after which you will eat breakfast and be driven to Delhi. After lunch at tonight's hotel, the opulent Leela Palace, you'll join a guided tour of New Delhi. Return to the Leela Palace to check in and refresh before dinner at the hotel.

Meals: Breakfast Lunch Dinner

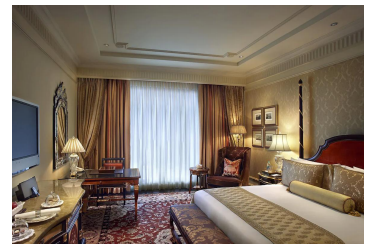


The Leela Palace New Delhi

The Palace showcases a stunning facade inspired by Lutyens's Delhi, seamlessly blending influences from ancient Indraprastha to medieval Shahjahanabad. Nestled in the Diplomatic Enclave, this luxury hotel provides convenient access to historic monuments, lush gardens, and vibrant markets, making it an ideal base for exploring the capital's rich heritage and culture.



Grande Deluxe Room
Grande Deluxe Rooms offer spacious luxury with stunning city skyline or inner courtyard views. A blend of elegant design and state-of-the-art amenities ensures a truly memorable experience.



06

FRIDAY
MAY 1, 2026

Memories in New Delhi

Enjoy an early breakfast before your transfer to the airport for your onward flight.

Meals: Breakfast



IMPORTANT INFORMATION

Please note:

It is recommended that guests wear lightweight casual clothing and comfortable sports or walking shoes. It is also recommended for guests to bring a hat, sunglasses and sunscreen for daytime sightseeing. Long lightweight shirt and pants are recommended to be worn during the game drives.

Satellite phones are not allowed at all and is a legal offence, a person carrying the same will be confiscated and will have to go through the legal procedures – questioning by intelligence bureau etc. It is strictly advised guests do not to carry any Satellite phone.

This program is not wheelchair accessible. As this excursion involves continued walking in different surfaces, long time standing, and stair climbing in hot/humid conditions, it is not recommended for guests with medical conditions or walking difficulties.

Luggage Requirements: Regularly scheduled flights are used and it is recommended that guests limit their luggage to one check-in small bag not to exceed 15kg (33lbs).

Included:

- All flights, transfers, accommodation, meals, activities, entrance fees as stated.
- The services of an English-speaking tour guide, and English-speaking naturalist during the game drives.
- Transportation for tours in a luxury private vehicle.
- Bottled water soft drinks during sightseeing tour long drives.

Excluded:

- Any travel, meals, drinks, and activities not specified in the tour description.
- Any personal expenditure, for example souvenirs, laundry, phone calls, etc.
- Any Visa fees.
- Any excess baggage costs with airlines.
- Any other services not mentioned in program.

