



DISCOVERING DENALI

4 NIGHTS / 5 DAYS

Seward (Anchorage, Alaska), United States Of America To Anchorage, United States Of America

Price Per Person

Double Occupancy: 3,900.00 USD

Single Occupancy: 4,500.00 USD

Journey deep into the incredible Denali National Park – six million acres of pristine wilderness roamed by bears and wolves, and watched over by North America’s tallest mountain.

HIGHLIGHTS

- Awe-inspiring views of Alaska’s magnificent landscape
- A scenic rail journey from Denali National Park to Talkeetna
- Mesmerizing wildlife encounters with bears, moose, and more
- Experience the thrill of dog mushing
- Exclusive wildlife experience just for Crystal guests



01

DAY ONE: The wild road into Alaska

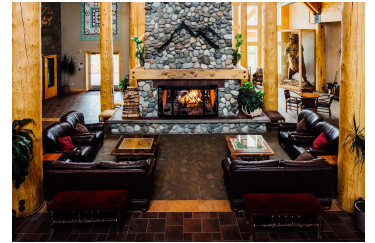
This morning you'll bid farewell to the ship in Seward and meet your local guide for the next few days. Your first stop is the Alaska Wildlife Conservation Center in Girdwood, where you will have a chance to see the region's wildlife up close - including an exclusive private encounter with one of the animals - and enjoy a delicious lunch. Then we continue the quaint community of Talkeetna, where you'll spend the night at Talkeetna Alaskan

Meals: Dinner



Talkeetna Alaskan Lodge

Set on a ridge above the small community of Talkeetna on the south side of Denali, the Talkeetna Alaskan Lodge offers unforgettable views of Denali and the Alaska Range, yet just minutes from adventures of a lifetime. Enjoy the view as you relax next to the 46-foot river rock fireplace or shop for Native art from villages across Alaska. Enjoy casual or fine dining featuring Alaska specialties and the best wine selection in the neighborhood.



Run Of House
All rooms feature a full private bath, hair dryer, coffee maker, refrigerator, satellite television, telephone, and wireless internet.



DAY TWO: Raise a glass and mush a dog team

After breakfast at the hotel, it's time to board your deluxe motorcoach for the short drive to Denali Brewing to try its delicious beers and hearty, seasonal fare. After lunch, you'll take part in a thrilling dog mushing experience. You'll then check into your Denali hotel, where you'll have dinner and spend the night.

Meals: Breakfast Lunch

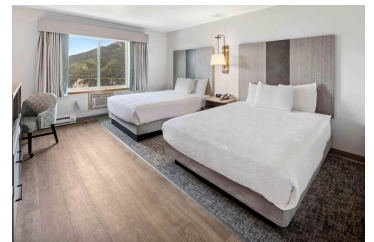
**Grande Denali Lodge**

The Grande Denali Lodge brings you genuine Alaskan hospitality, inviting accommodations, and spectacular views! Located above the hustle of the highway, our guests consider their stay with us to be a highlight in their journey.



Run Of House

Each room include: Flat Screen TV with cable channel selections, complimentary coffee and tea, hair dryer, iron and ironing board, air conditioning, complimentary Wi-Fi Mini refrigerator and microwave

**Denali Bluffs Hotel**

Welcome to Denali Bluffs Hotel, where comfort meets wilderness. Our guest rooms are spread across 12 charming hillside buildings, many featuring private balconies with stunning views. The main lodge invites you to relax in its timber-beamed great room, enjoy the stone fireplace, and take in panoramic vistas from the viewing deck near the Mountaineer Grill and Bar. Your Alaskan adventure starts here.



Run Of House

Each room features a flatscreen TV with cable channels, a mini refrigerator, a coffee and tea station, a hair dryer, and complimentary Wi-Fi.



DAY THREE: On the lookout for bears and moose

It's an early start today as you depart on the Tundra Wilderness Tour to venture deep into the heart of Denali National Park, looking out for the bears, moose, caribou, and Dall sheep that call the park home. The 5 to 5.5-hour journey is narrated, providing valuable insight into the flora and fauna of this spectacular region. You'll also enjoy a visit to the Denali Discovery Center for a private talk about life here. Dinner tonight is at the hotel.



Meals: Breakfast Lunch

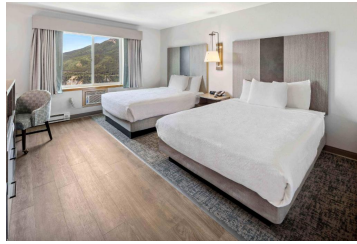
Grande Denali Lodge

The Grande Denali Lodge brings you genuine Alaskan hospitality, inviting accommodations, and spectacular views! Located above the hustle of the highway, our guests consider their stay with us to be a highlight in their journey.



Run Of House

Each room include: Flat Screen TV with cable channel selections, complimentary coffee and tea, hair dryer, iron and ironing board, air conditioning, complimentary Wi-Fi Mini refrigerator and microwave



Denali Bluffs Hotel

Welcome to Denali Bluffs Hotel, where comfort meets wilderness. Our guest rooms are spread across 12 charming hillside buildings, many featuring private balconies with stunning views. The main lodge invites you to relax in its timber-beamed great room, enjoy the stone fireplace, and take in panoramic vistas from the viewing deck near the Mountaineer Grill and Bar. Your Alaskan adventure starts here.



Run Of House

Each room features a flatscreen TV with cable channels, a mini refrigerator, a coffee and tea station, a hair dryer, and complimentary Wi-Fi.



04

DAY FOUR: Take scenic train Talkeetna

This morning, board a deluxe dome railcar for a scenic rail journey from Denali National Park to Talkeetna. With its wraparound windows, the railcar offers a unique perspective on this incredible landscape. Lunch is provided en route. Upon arrival, you'll take a deluxe motorcoach to Anchorage for your final night. Dinner tonight is at a local seafood restaurant.

Meals: Breakfast Lunch Dinner



Hotel Captain Cook

Located in the heart of downtown Anchorage, Alaska, every one of the Hotel Captain Cook's 546 rooms and suites offers stunning views of the neighboring Cook Inlet or the Chugach Mountains. The Hotel Captain Cook offers rooms and suites to suit any and every traveler's need. Facilities and services include four distinct restaurants, an espresso bar, a swimming pool, fitness facilities, meeting and event facilities and massage services.



05

DAY FIVE: Depart Alaska

Your Alaskan adventure is sadly at an end. After breakfast at your hotel, you'll transfer to the airport for your onward travel.

Meals: Breakfast



IMPORTANT INFORMATION

Please note:

Hotel confirmations for Anchorage and Denali will be provided closer to the departure date

Transportation within Denali National Park is provided by park-operated buses.

Mornings and evenings can be chilly - we recommend you pack layers and bring a fleece and a raincoat.

Those with limited mobility should be mindful that there are many uneven surfaces. For all guests, comfortable, sturdy walking shoes are recommended.

Wi-Fi is not always available at remote locations.

Wildlife sightings are not guaranteed.

Minimum age six years.

Included:

- All transfers, accommodation, meals, entrance fees, and activities as stated.
- Gratuities for local Premier Guide, Premier driver, Denail Park Driver/Guide, rail staff and musher dog guide.

Excluded:

- Any travel, meals, drinks, and activities not specified in the tour description. Any personal expenditure, for example souvenirs, laundry, phone calls etc.

